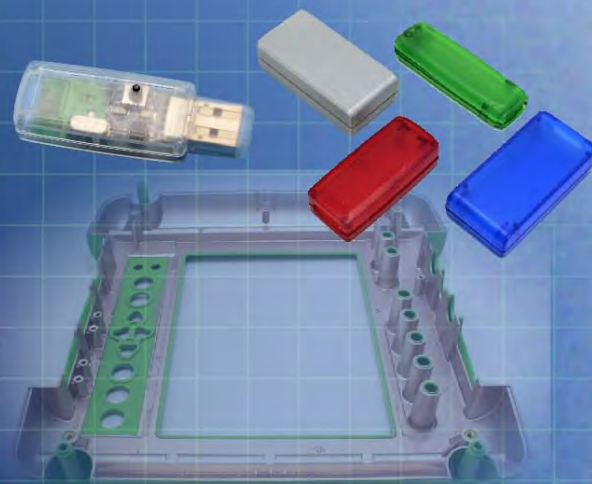
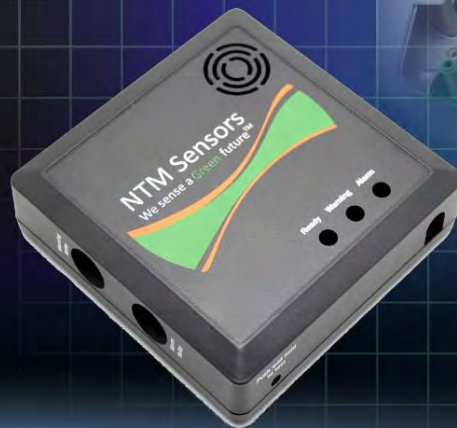




Ordering a market-ready enclosure® is made fast and affordable with our complete in-house capabilities. New Age provides machined openings to fit your PCB, pad printing for your graphics, custom enclosures, custom colors, final assembly, testing and fulfillment services to save you additional time and money. Ask your representative for a free quote today 805-595-1310.

Fast and Affordable Customization

CNC Modifications
Pad Printing
Colored Resins
EMI/RF Shielding
Custom Enclosure
Assembly & Testing



ISO quality
off-the-shelf
to market-ready®

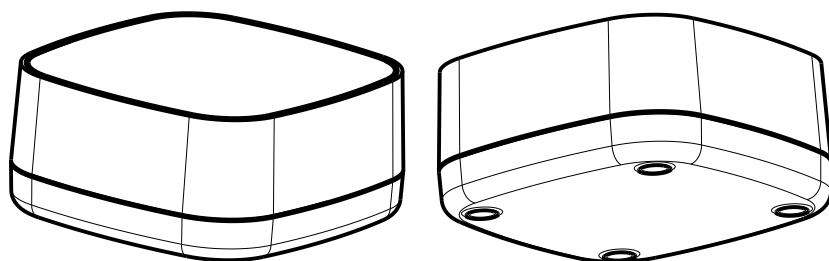
NEW AGE ENCLOSURES

www.NewAgeEnclosures.com

4330 Santa Fe Road • San Luis Obispo, CA 93401 • T 805.595.1310 • F 805.595.1024

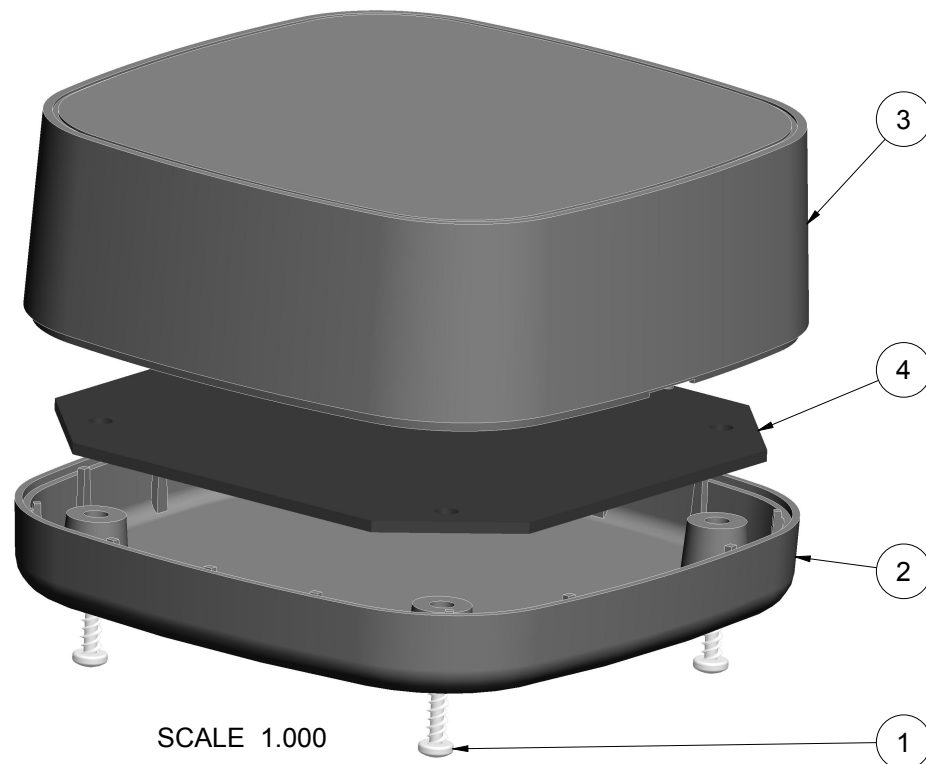
NOTES: UNLESS OTHERWISE SPECIFIED

1. CORNERS DRAWN SHARP TO BE R.005 MAXIMUM.
2. EXTERIOR SURFACE TEXTURE TO BE LIGHT EDM FINISH. EQUIVELANT TO MT-11020.
3. INTERIOR SURFACE TEXTURE TO BE: NONE.
4. ALL INSIDE RADII .010R. UNLESS OTHERWISE SPECIFIED.
5. ALL EXTERNAL DIMENSIONS AFFECTED BY THE DRAFT APPLY AT THE LARGE END OF THE FEATURE, AND ALL INTERNAL FEATURES AFFECTED BY THE DRAFT APPLY AT THE SMALL END OF THE FEATURE UNLESS OTHERWISE SPECIFIED.
6. 1 DEGREE DRAFT IN THE DIRECTION OF PULL IS PERMISSIBLE UNLESS OTHERWISE SPECIFIED.
7. MATERIAL / COLOR: ABS PLASTIC IS STANDARD IN BLACK OR WHITE. CUSTOM MATERIALS AND COLORS ARE AVAILABLE UPON REQUEST FOR QUOTE.
8. PCB SIZES ARE RECOMMENDATIONS ONLY. FINAL SIZES AND VERIFICATION OF IT'S FIT ARE THE SOLE RESPONSIBILITY OF EACH OWNER.
9. ASSEMBLY SCREWS FOR THE ENCLOSURE INCLUDED.
10. THIS DRAWING IS BASED ON A SOLID MODEL, AND IS FURTHER DEFINED BY THE SOLID MODEL FILE.
11. ALLOWABLE FLASH: 0.010 MAX.
12. ALL EJECTOR PIN MARKS TO BE WITHIN 0.010" OF FLUSH, PROTRUDING OR BELOW FLUSH.
13. TRIM GATE WITHIN 0.030" OF FLUSH.



SCALE 0.500

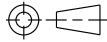
R E V I S I O N				
REV.	DRAWN BY	ECO No	DESCRIPTION	DATE
A	R CRUZ	DR XXX	PRELIMINARY RELEASE	2015-May-18
B	R CRUZ		UPDATE NOTE 2, PART NAME, PCB SHAPE	2015-Jun-23
C	M BOYER		REVISE SIZE AND DRAWING FORMAT	2015-Oct-27
D	R CRUZ		ADD RIBS TO BASE, INCREASE ASSY POST ID & OD	2015-Dec-15
E	M BOYER		REVISE TEXTURE NOTE	2016-Feb-22



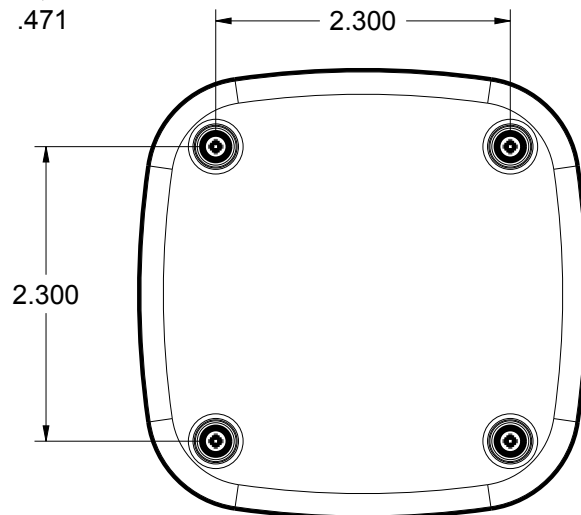
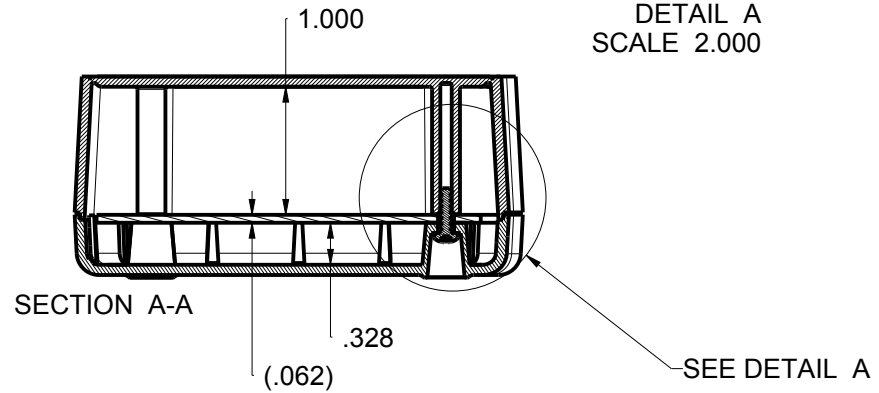
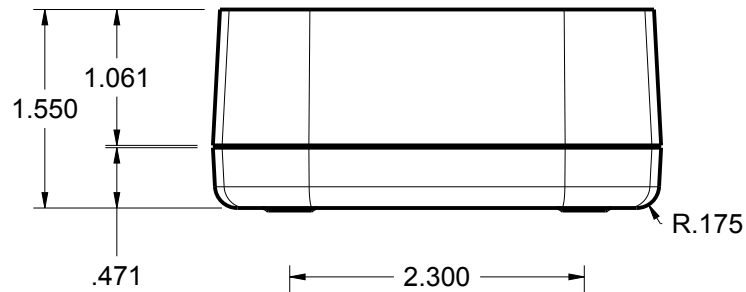
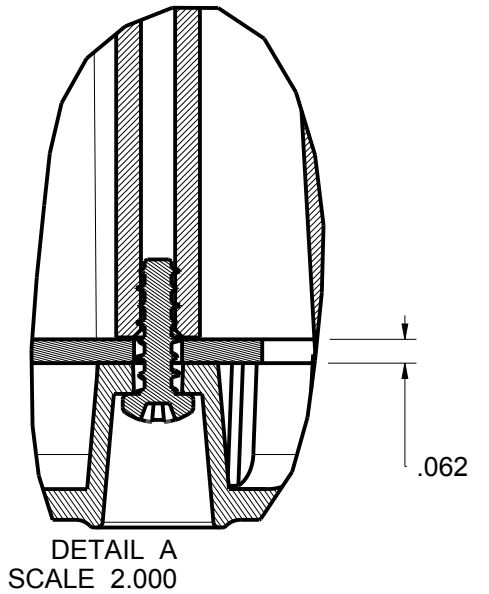
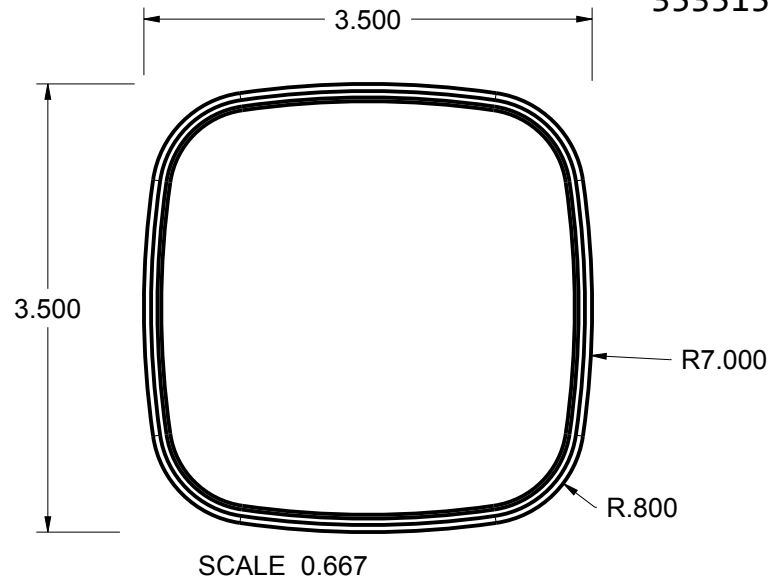
SCALE 1.000

4	353515_PCB	353515 PCB - REFERENCE	.062" THICK	CUSTOMER SUPPLIED	1
3	353515_COVER	353515 COVER - STANDARD	ABS	BLACK or WHITE	1
2	353515_BASE	353515 BASE - STANDARD	ABS	BLACK or WHITE	1
1	SCREW_HILO-N04X375	#4 HiLo x .375" SCREW	ZINK PLATED	3/8" LONG	4

ITEM	FILE NAME	DESCRIPTION	MATERIAL	COLOR	QTY.
BILL OF MATERIALS					

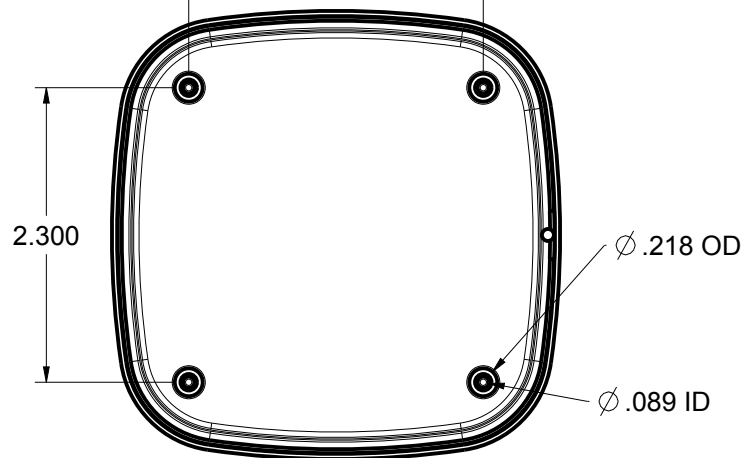
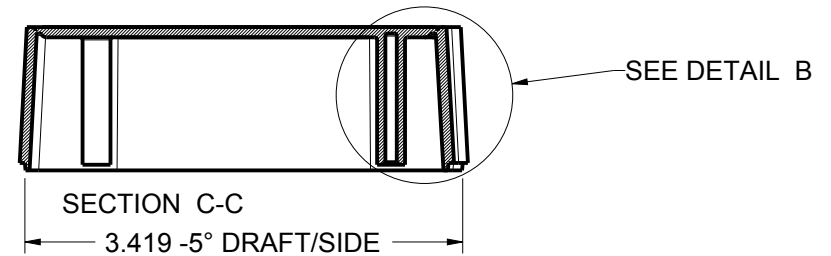
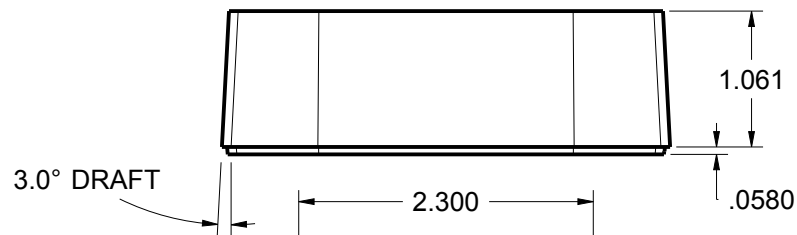
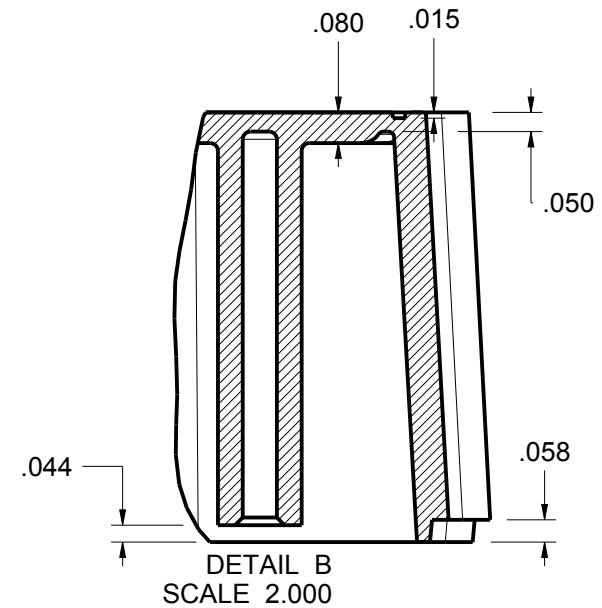
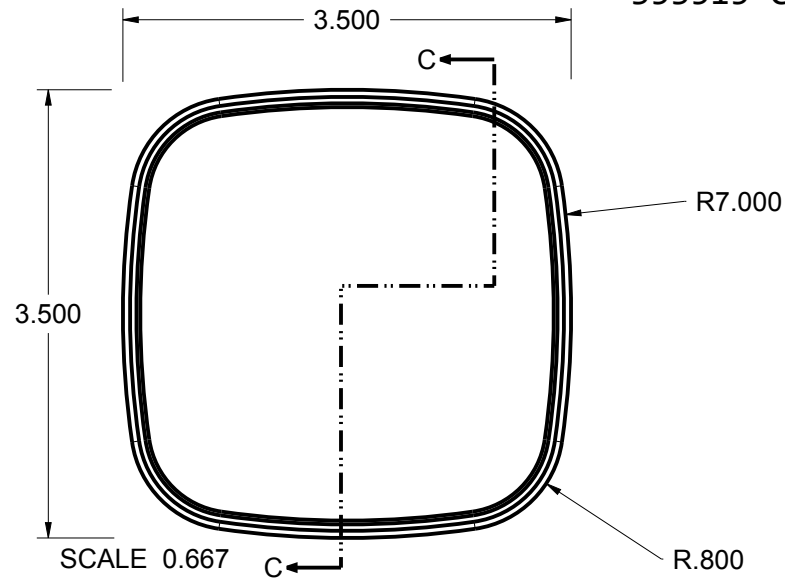
THIRD ANGLE PROJECTION  DO NOT SCALE DRAWING		TOLERANCES: UNLESS OTHERWISE SPECIFIED DIMENSIONS ARE IN U.S. INCHES. X.XX = .015 X.XXXX = .001 X.XXX = .010 X.X" = 1"		<div>NEW AGE ENCLOSURES</div> <div>4330 Santa Fe Road San Luis Obispo, CA. 93401 ph. (805) 595-1310 fax (805) 595-1024 www.newageenclosures.com</div>				
<div>NOTICE: THE INFORMATION AND DATA CONTAINED HEREIN IS CONSIDERED PROPRIETARY TO ALTEC INTEGRATED MFG INC & SHALL REMAIN THE EXCLUSIVE PROPERTY OF ALTEC INTEGRATED MFG INC. THE HOLDER WILL ASSUME CUSTODY AND CONTROL. THAT THIS DOCUMENT WILL NOT BE COPIED, REPRODUCED OR DISCLOSED WITHOUT THE EXPRESS WRITTEN CONSENT OF ALTEC INTEGRATED MFG INC. POSSESSION OF THIS DOCUMENT DOES NOT CONSTITUTE A GRANT TO MANUFACTURE ANY ITEMS.</div> <div>© 2015</div>		Customer's Part No: 353515		<div>MEDIUM HUB - STANDARD</div> <div>SXX-353515-XXX</div>				
		APPROVAL	BY					DATE
		CHECK						
		ENG.						
		SCALE	AS NOTED					
DRAWN BY		R CRUZ		SIZE	DRAWING NAME	SHEET	REV.DOC	
		2015-May-18		A	353515_RE	1 OF 6	E	

353515 ASSEMBLY



TOLERANCES: UNLESS OTHERWISE SPECIFIED DIMENSIONS ARE IN U.S. INCHES.		NEW AGE ENCLOSURES	
X.XX = .015 X.XXXX = .001 X.XXX = .010 X.X° = 1°		4330 Santa Fe Road San Luis Obispo, CA. 93401 ph. (805) 595-1310 fax (805) 595-1024 www.newageenclosures.com	
Customer's Part No: 353515			
APPROVAL	BY	DATE	
CHECK			
ENG.			
SCALE	AS NOTED		
DRAWN BY	2015-May-18		
R CRUZ	SIZE	DRAWING NAME	SHEET
	A	353515_RE	2 OF 6
REV.DOC			E

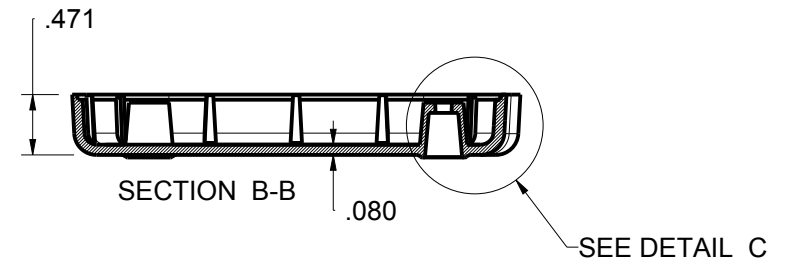
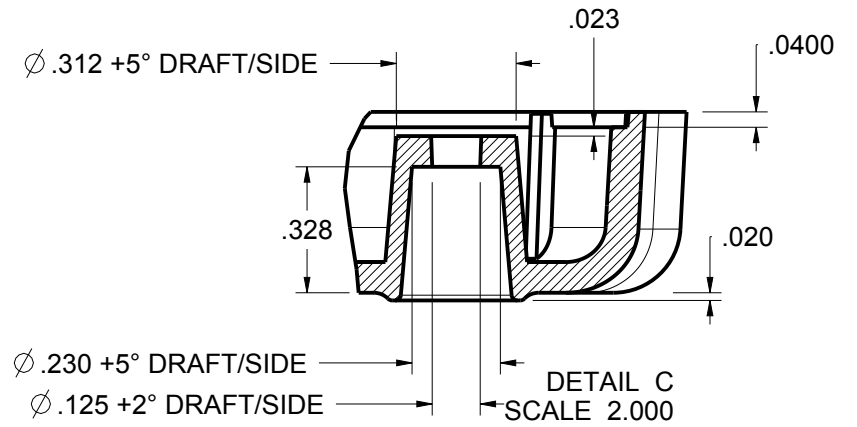
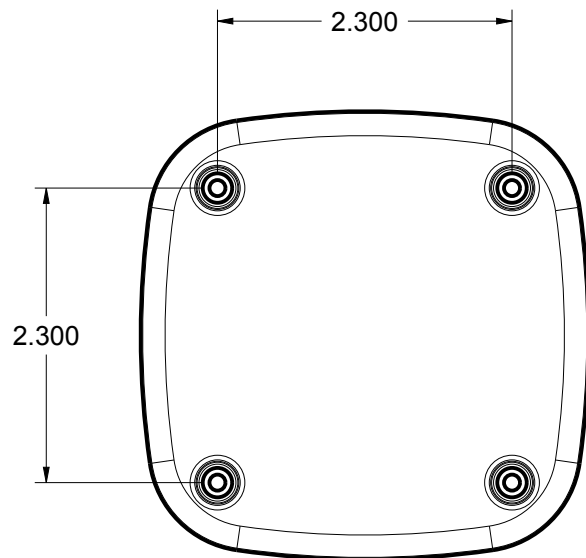
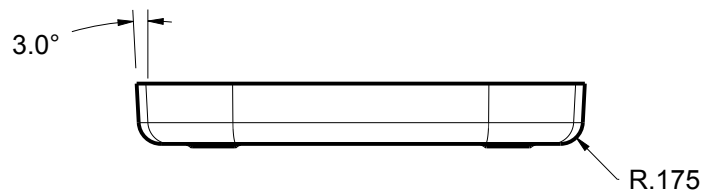
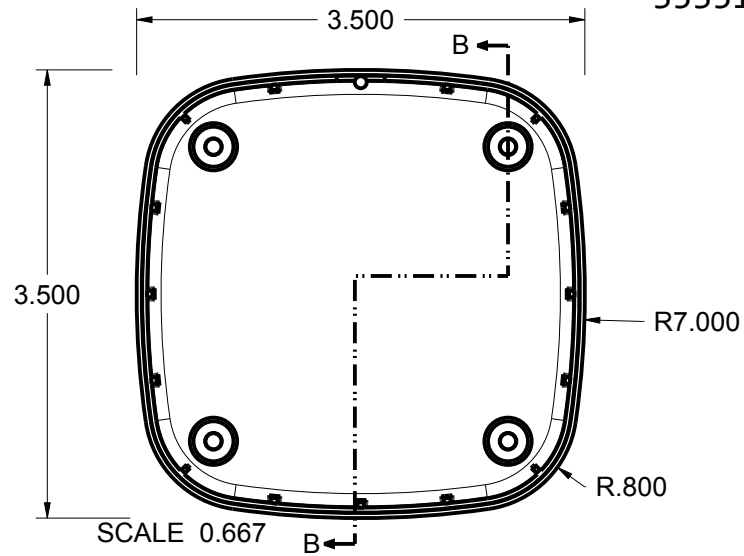
353515 COVER



TOLERANCES- UNLESS OTHERWISE SPECIFIED DIMENSIONS ARE IN U.S. INCHES.		
X.XX = .015 X.XXXX = .001		
X.XXX = .010 X.X° = 1°		
NEW AGE ENCLOSURES		
Customer's Part No: 353515		
APPROVAL	BY	DATE
CHECK		
ENG.		
SCALE	AS NOTED	
DRAWN BY	2015-May-18	
R CRUZ		

NEW AGE ENCLOSURES		
4330 Santa Fe Road San Luis Obispo, CA. 93401		
ph. (805) 595-1310 fax (805) 595-1024		
www.newageenclosures.com		
MEDIUM HUB - STANDARD		
SXX-353515-XXX		
SIZE	DRAWING NAME	SHEET
A	353515_RE	3 OF 6
		REV.DOC
		E

353515 BASE

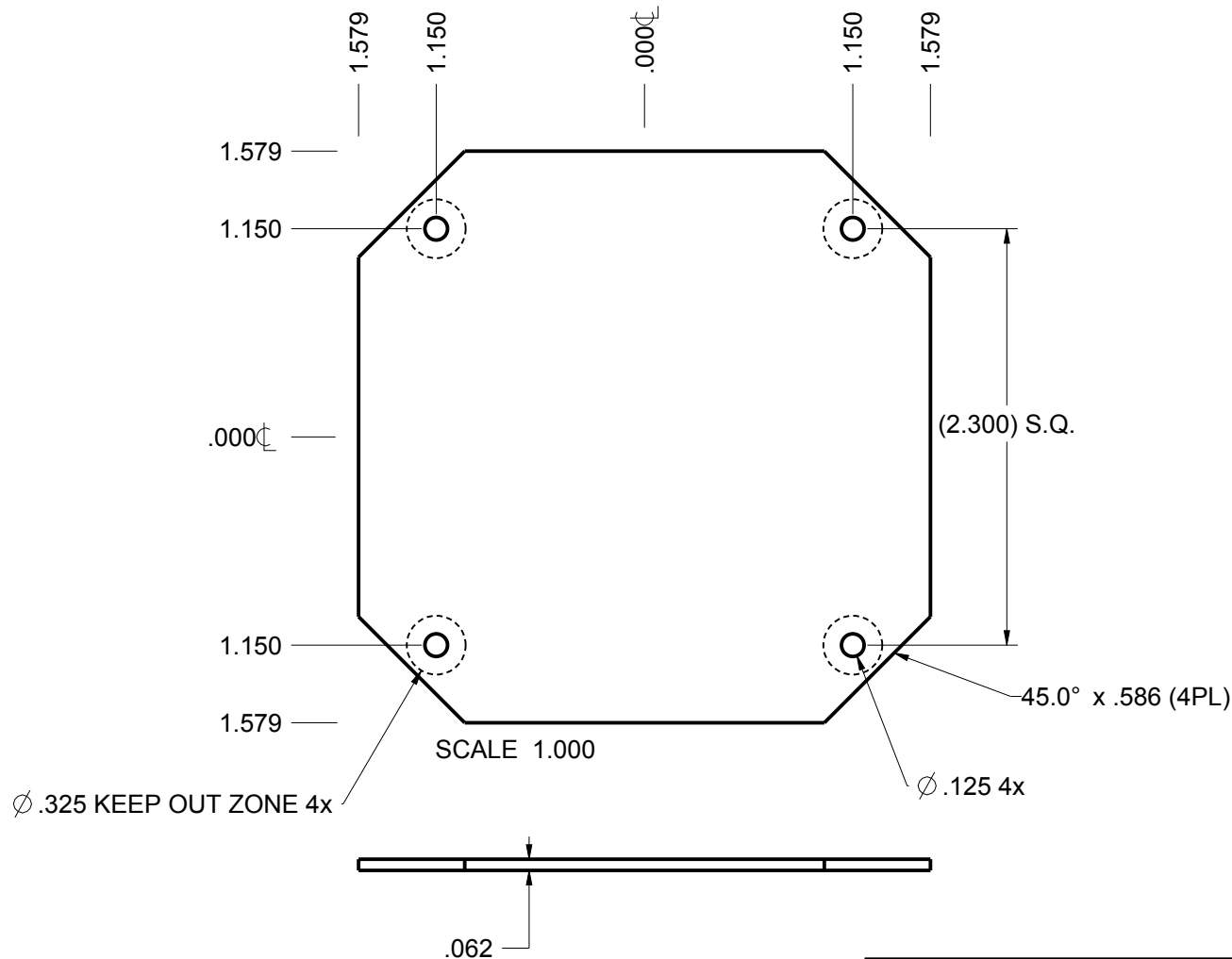


TOLERANCES- UNLESS OTHERWISE SPECIFIED DIMENSIONS ARE IN U.S. INCHES.		
X.XX = .015 X.XXXX = .001		
X.XXX = .010 X.X° = 1°		
NEW AGE ENCLOSURES		
Customer's Part No: 353515		
APPROVAL	BY	DATE
CHECK		
ENG.		
SCALE	AS NOTED	
DRAWN BY	2015-May-18	
R CRUZ		

NEW AGE ENCLOSURES			
4330 Santa Fe Road ph. (805) 595-1310		San Luis Obispo, CA. 93401 fax (805) 595-1024	
<i>www.newageenclosures.com</i>			
MEDIUM HUB - STANDARD			
SXX-353515-XXX			
SIZE	DRAWING NAME	SHEET	REV.DOC
A	353515_RE	4 OF 6	E

353515 PCB - CUSTOMER SUPPLIED

PCB SIZES/SHAPE ARE RECOMMENDATIONS ONLY. ALTERNATE
PCB DESIGNS ARE COMPATIBLE BUT MUST FIT INSIDE ENVELOPE
DIMENSIONS AND MAINTAIN MOUNTING HOLE LOCATION AND SIZE.
FINAL SIZES AND VERIFICATION OF ITS FIT ARE THE SOLE
RESPONSIBILITY OF THE CUSTOMER.

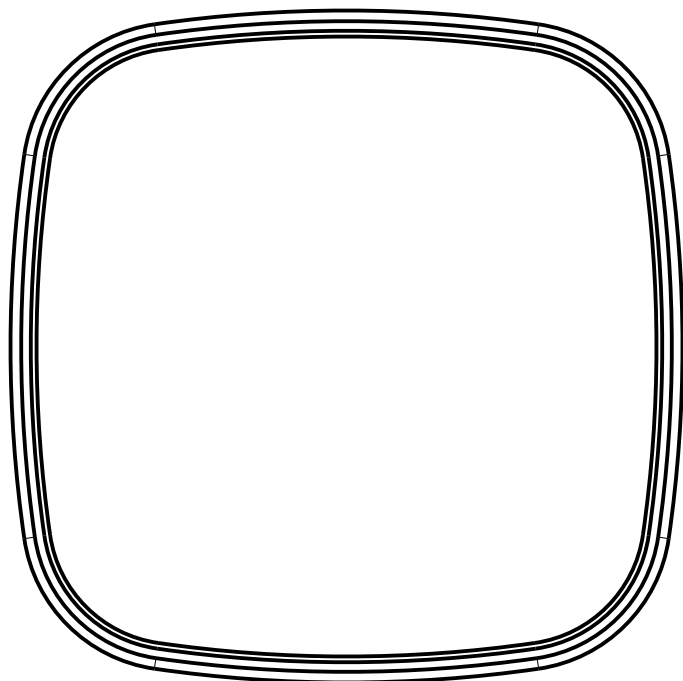


TOLERANCES- UNLESS OTHERWISE SPECIFIED DIMENSIONS ARE IN U.S. INCHES.	
X.XX = .015 X.XXXX = .001	
X.XXX = .010 X.X° = 1°	
NEW AGE ENCLOSURES	
Customer's Part No: 353515	
APPROVAL	BY DATE
CHECK	
ENG.	
SCALE	AS NOTED
DRAWN BY	2015-May-18
R CRUZ	

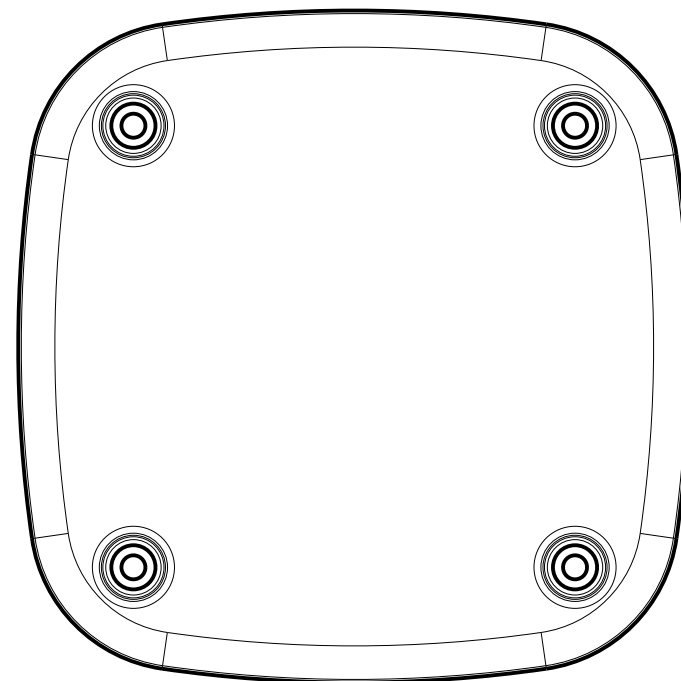
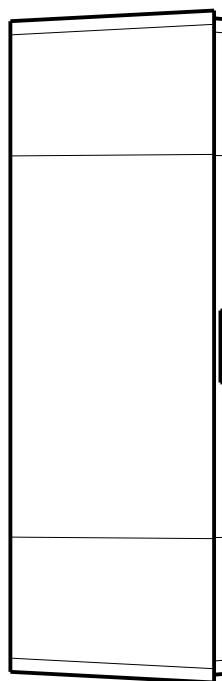
NEW AGE ENCLOSURES	
4330 Santa Fe Road San Luis Obispo, CA. 93401	
ph. (805) 595-1310 fax (805) 595-1024	
www.newageenclosures.com	
MEDIUM HUB - STANDARD	
SXX-353515-XXX	
SIZE	DRAWING NAME
A	353515_RE
SHEET	REV.DOC
5 OF 6	E

2nd OPERATION DETAILS

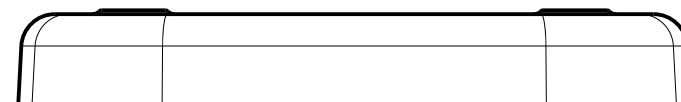
NEW AGE ENCLOSURES DELIVERS YOUR ENCLOSURE MARKET-READY WITH IN-HOUSE
CNC MACHINING, PAD PRINTING, ASSEMBLY, AND FULFILLMENT.
ALL SURFACES AND AREAS ARE AVAILABLE FOR CNC ALTERATION BY NEW AGE ENCLOSURES
CALL (805) 595-1310 FOR PRICING AND SCHEDULE.
THE INSIDE RADIUS OF ANY MACHINED FEATURES SHOULD BE NO SMALLER THAN .031"



353515 COVER
SCALE 1.000



353515 BASE
SCALE 1.000



Sxx-353515-xxx COVER - ABS, BLACK					
STEP NO	DESCRIPTION	CUTTER	FIXTURE	ORIENTATION	PROGRAM
1-C-C1	-	T2 = .062" EM	-	-	o1000
2-C-C2	-	T2 = .062" EM	-	-	o1000

Sxx-353515-xxx COVER - ABS, BLACK					
STEP NO	DESCRIPTION	INK COLOR	CLICHE DESCRIPTION	CLICHE No.	
3-C-P1	PAD PRINT	BLACK	-	CLXXXX R1	

TOLERANCES: UNLESS OTHERWISE SPECIFIED
DIMENSIONS ARE IN U.S. INCHES.
X.XX = .015 X.XXXX = .001
X.XXX = .010 X.X° = 1°

NEW AGE ENCLOSURES
Customer's Part No: 353515

APPROVAL BY DATE
CHECK
ENG.
SCALE AS NOTED
DRAWN BY R CRUZ 2015-May-18

NEW AGE ENCLOSURES
4330 Santa Fe Road San Luis Obispo, CA. 93401
ph. (805) 595-1310 fax (805) 595-1024
www.newageenclosures.com

**MEDIUM HUB - STANDARD
SXX-353515-XXX**

SIZE A	DRAWING NAME 353515_RE	SHEET 6 OF 6	REV.DOC E
--------	------------------------	--------------	-----------